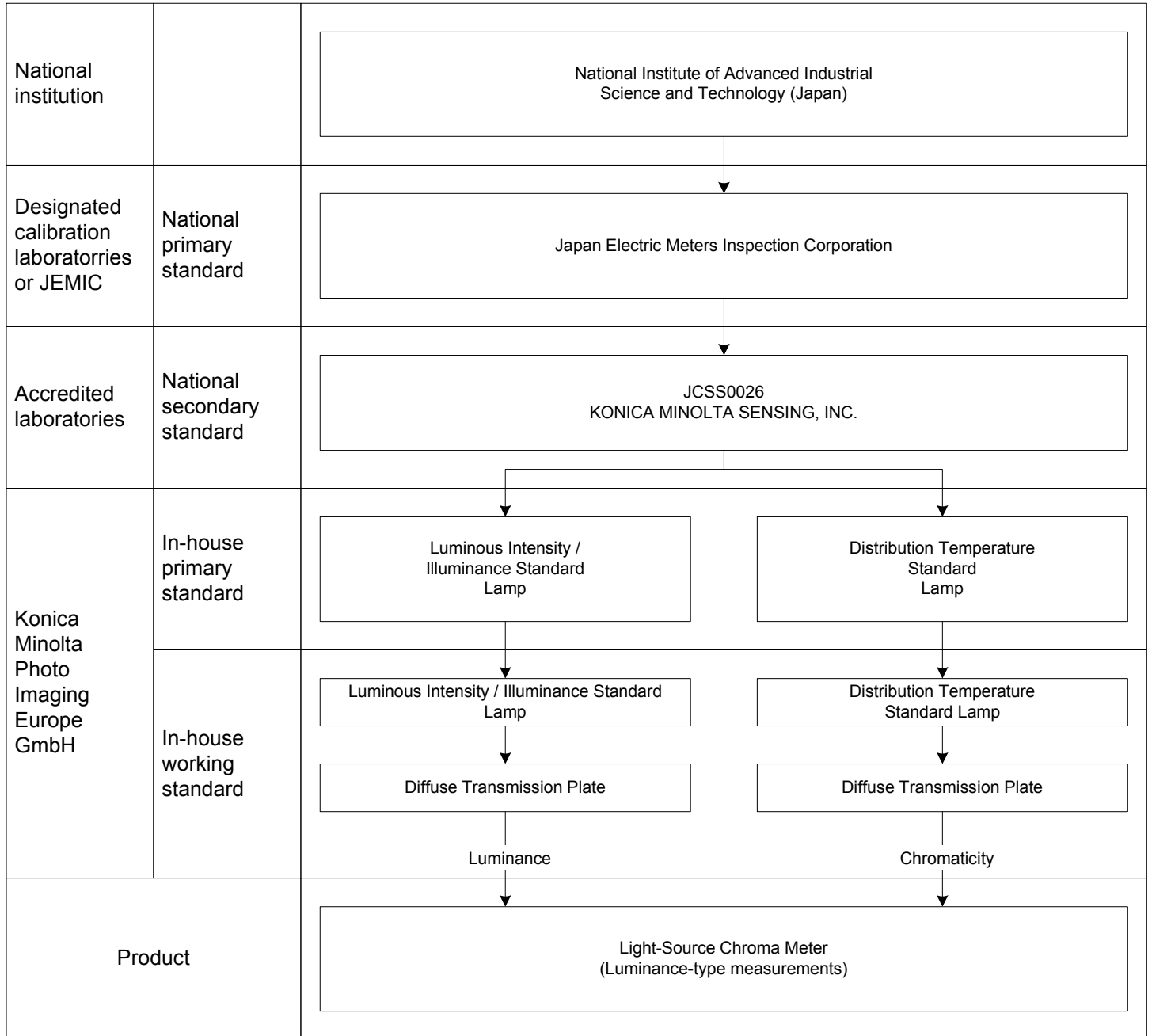




KONICA MINOLTA

# Traceability System for Light Source Chroma Meter (Luminance-type measurement)

January, 2004  
Konica Minolta Photo Imaging Europe GmbH  
Instrument Systems Division



**Interval between calibration:**

- Primary Standard Luminous Intensity / Illuminance Standard Lamp: 5 years or 30 hours of accumulated use
- Working Standard Luminous Intensity / Illuminance Standard Lamp: 1 year or 30 hours of accumulated use
- Primary Standard Distribution Temperature Standard Lamp: 5 years or 30 hours of accumulated use
- Working Standard Distribution Temperature Standard Lamp: 1 year or 30 hours of accumulated use
- Diffuse Transmission Plate: 1 year

JCSS0026: Japan Calibration Service System, the calibration laboratory accreditation system in Japan.  
The organization number for KONICA MINOLTA SENSING, INC. is 0026